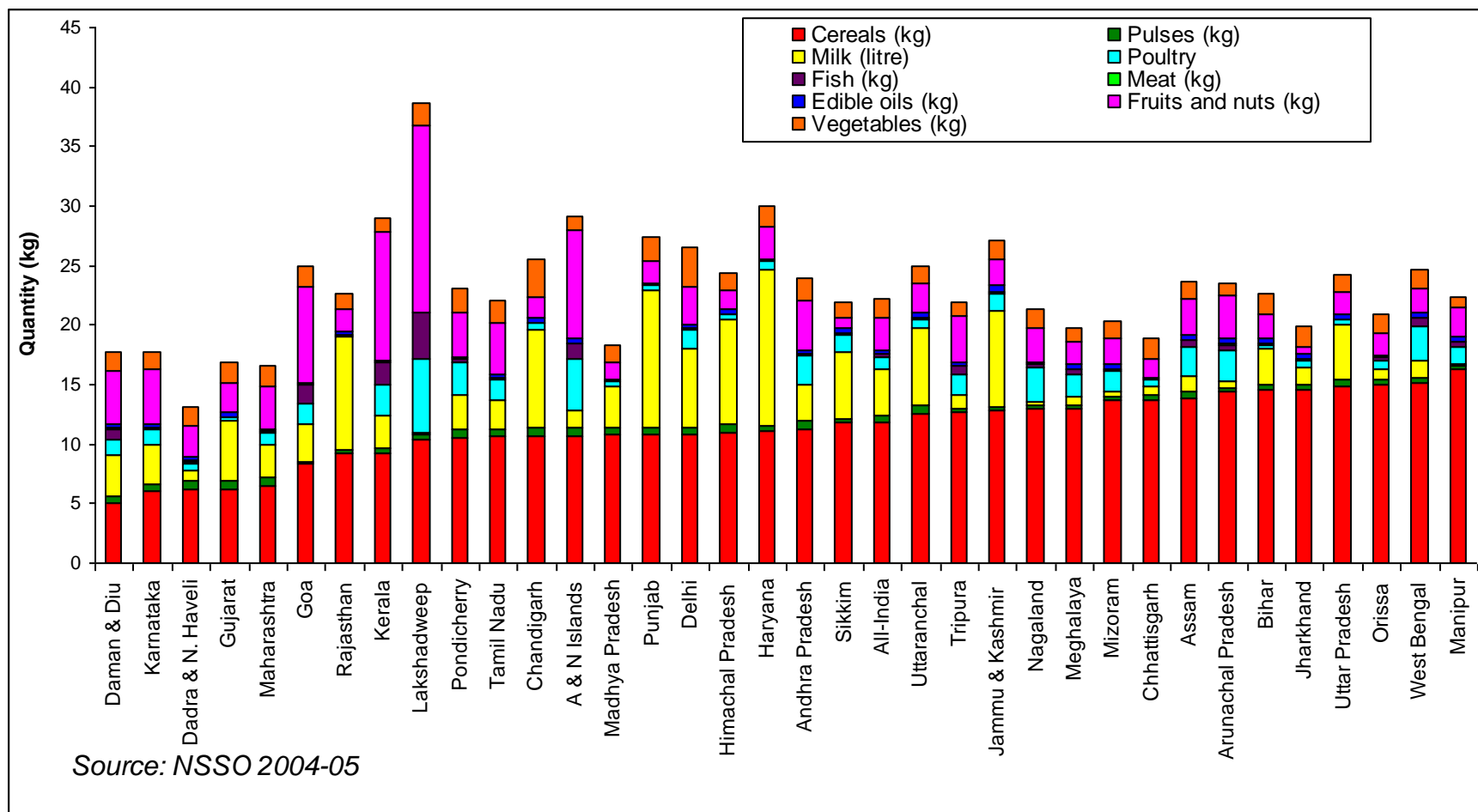
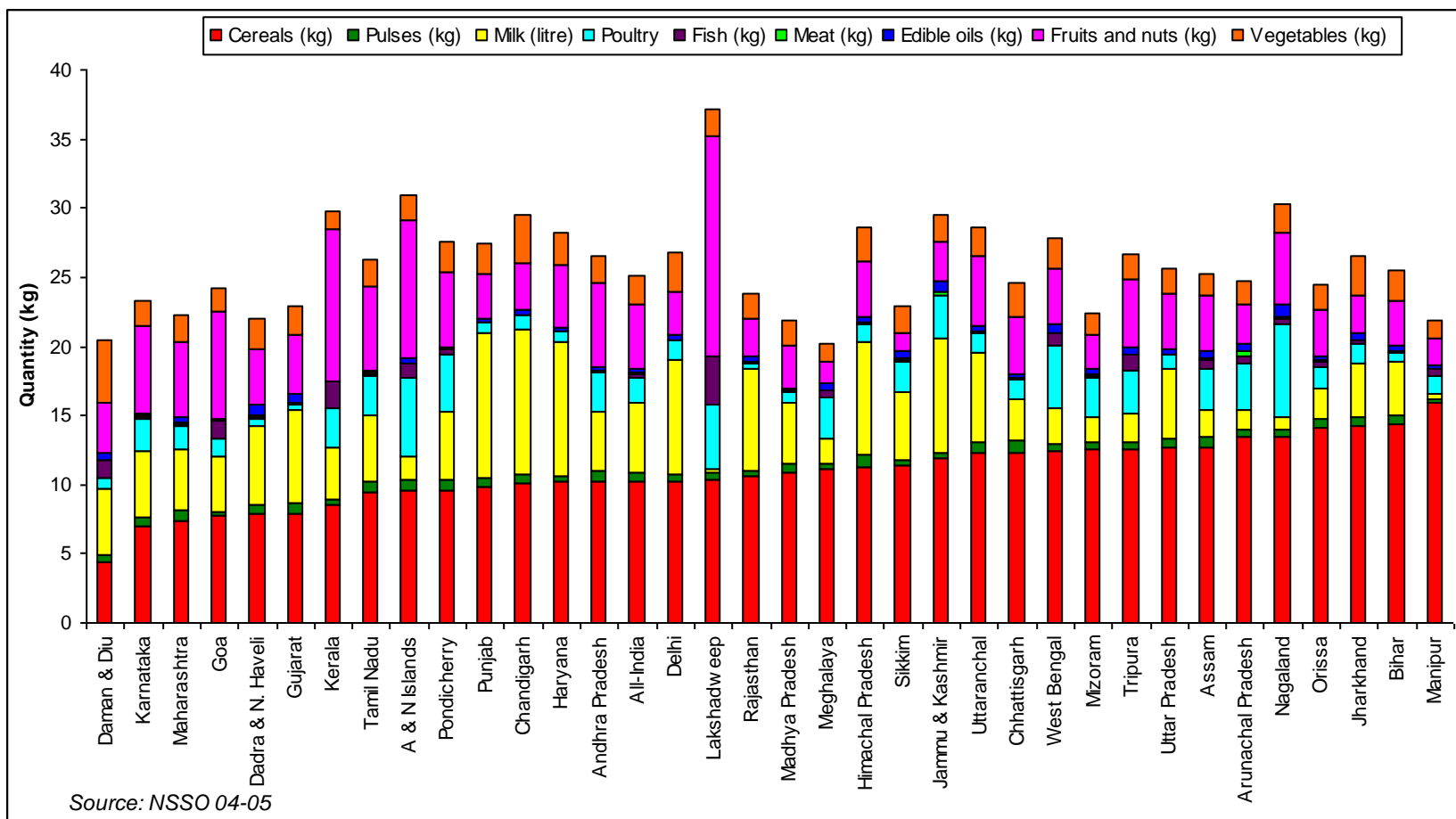


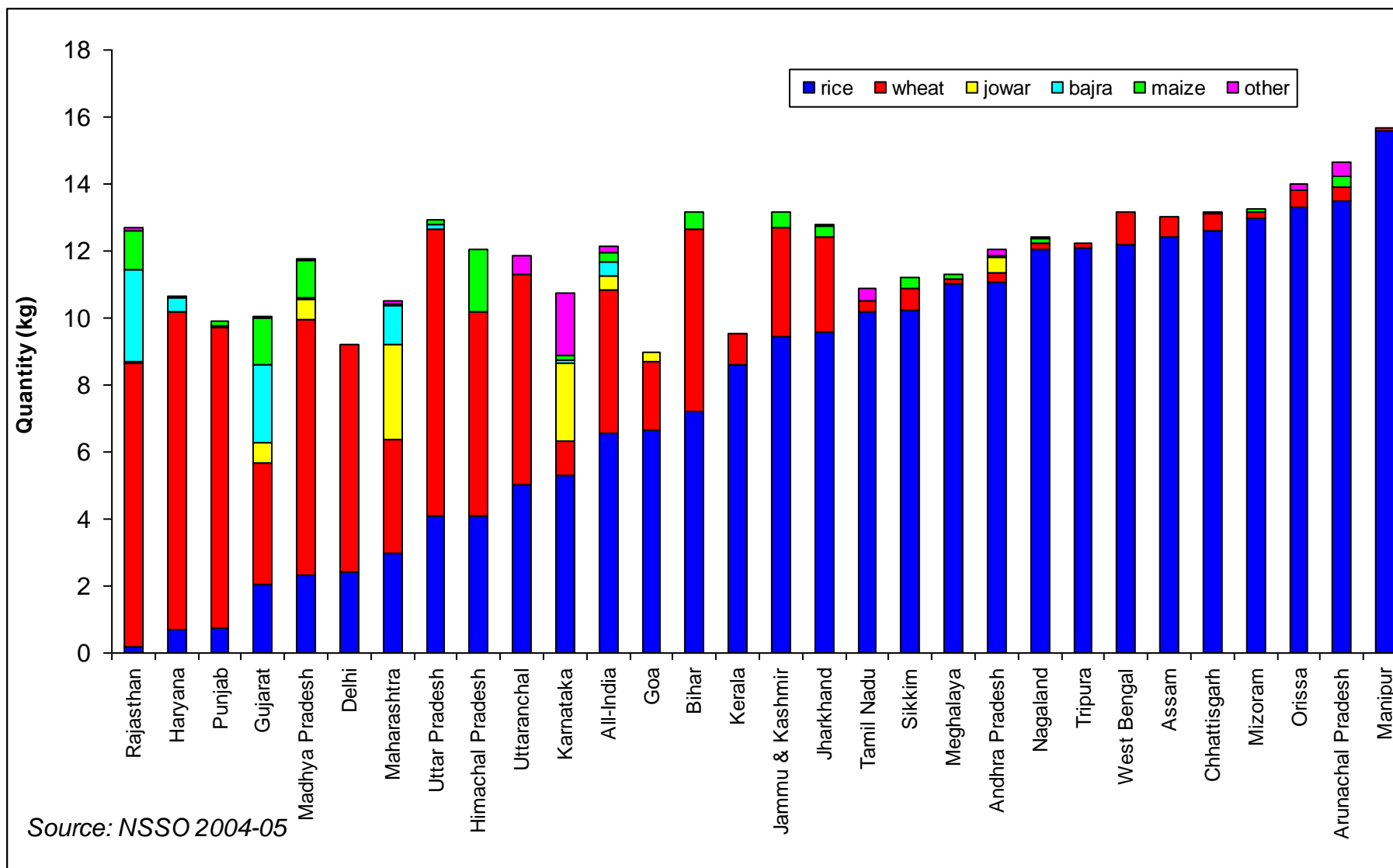
Monthly per capita quantity of consumption (kg) of selected commodities in rural areas



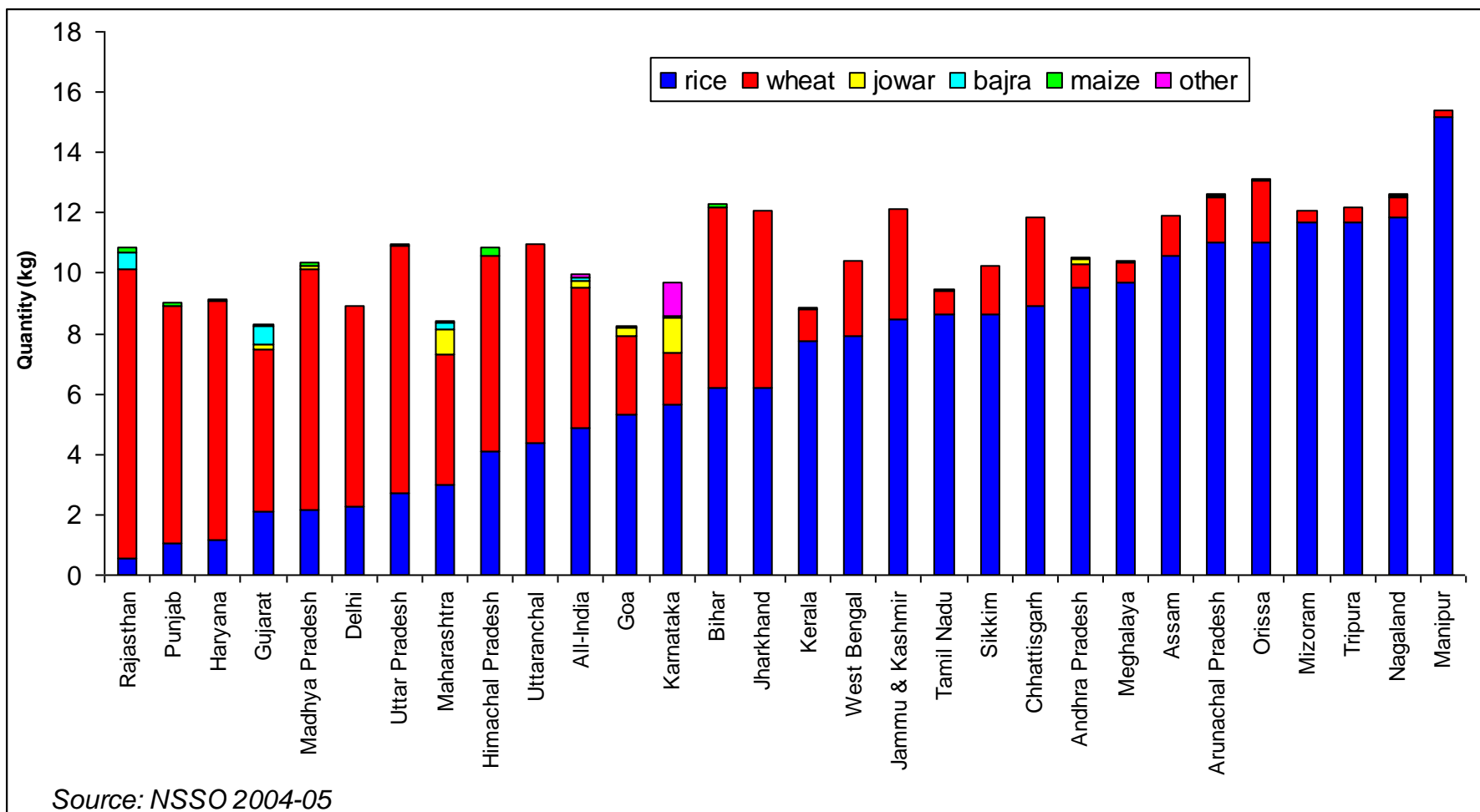
Monthly per capita consumption (kg) of selected commodities in urban areas



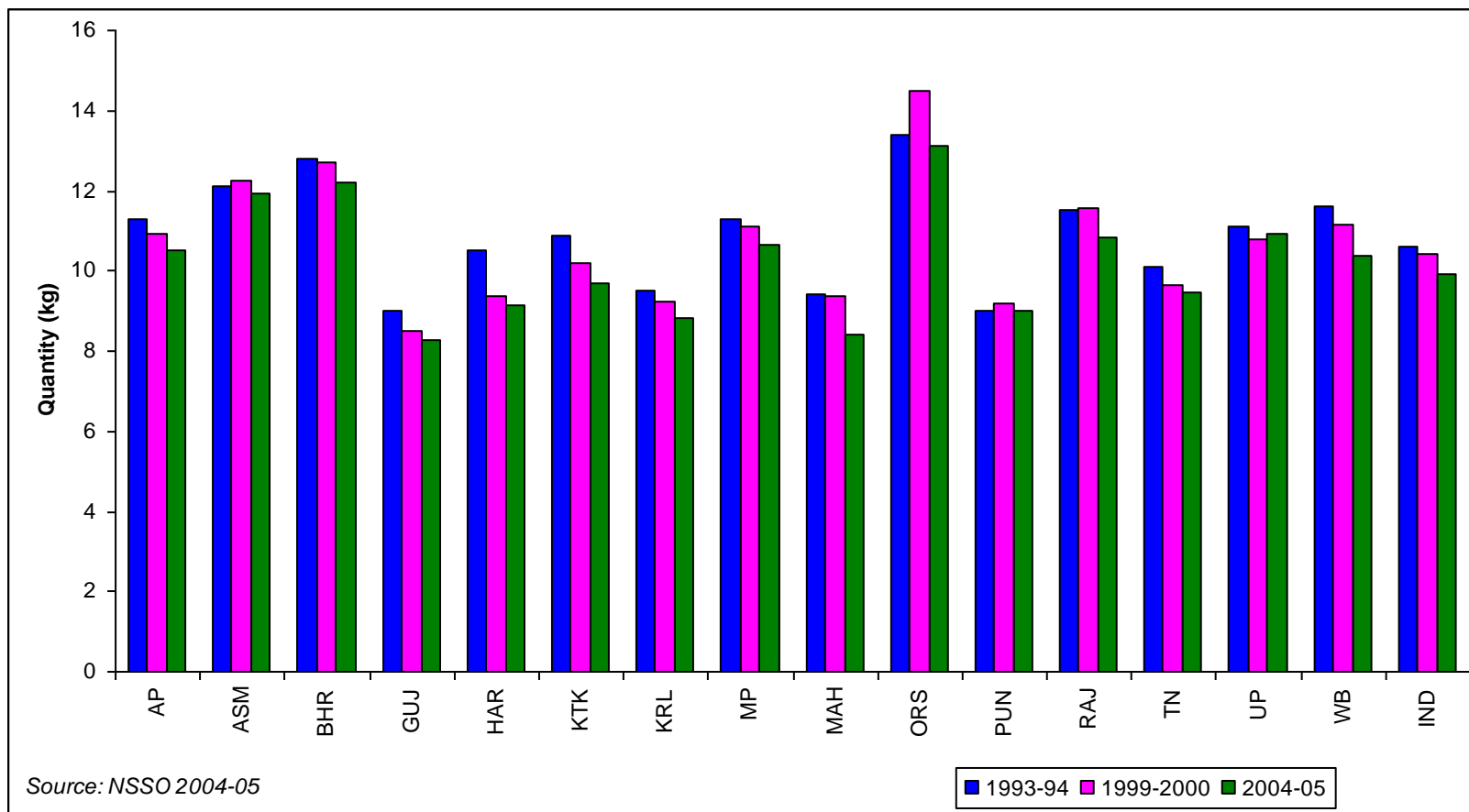
Interstate differences in average quantity of cereal consumption per person in rural areas



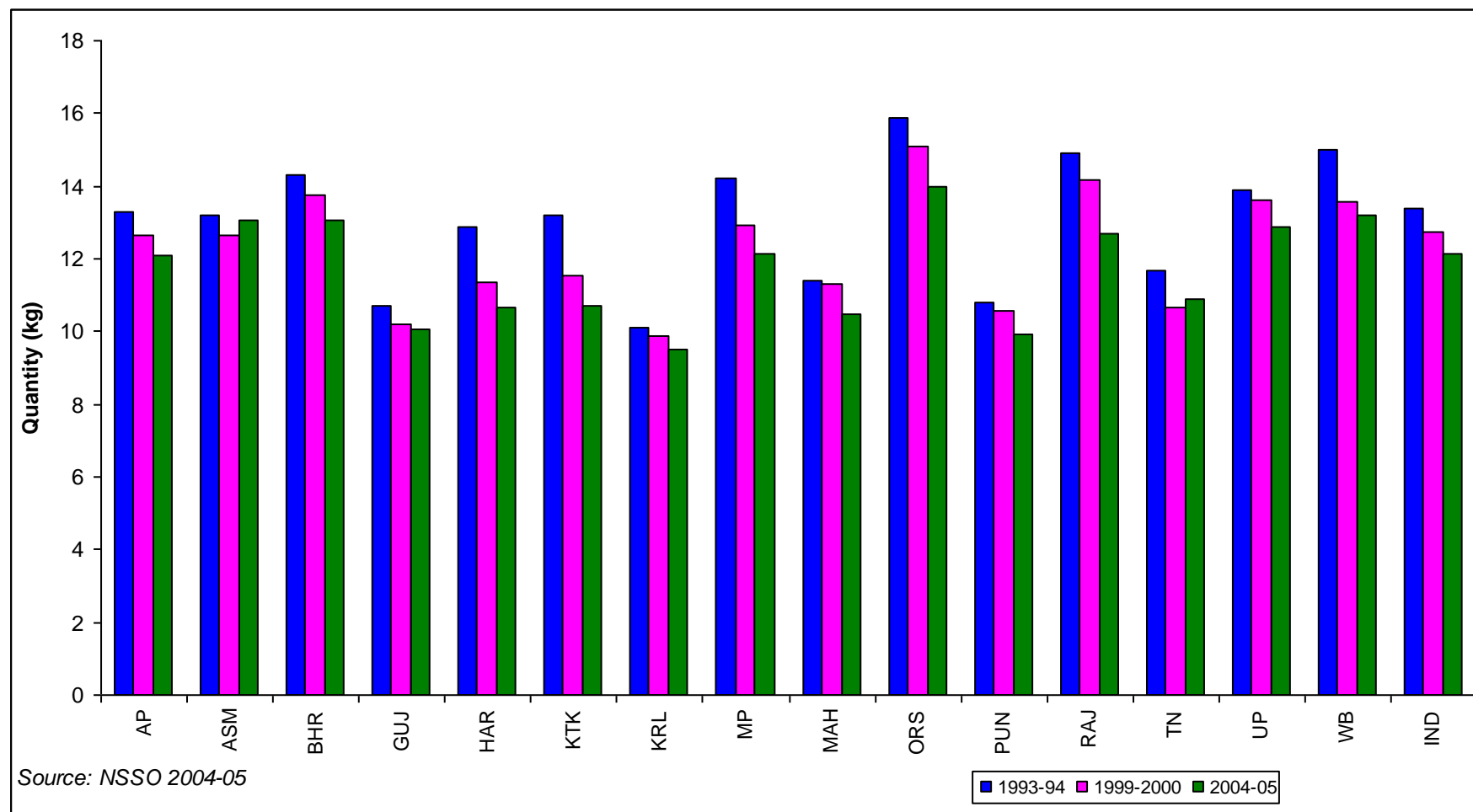
Interstate differences in average consumption of cereals in urban areas



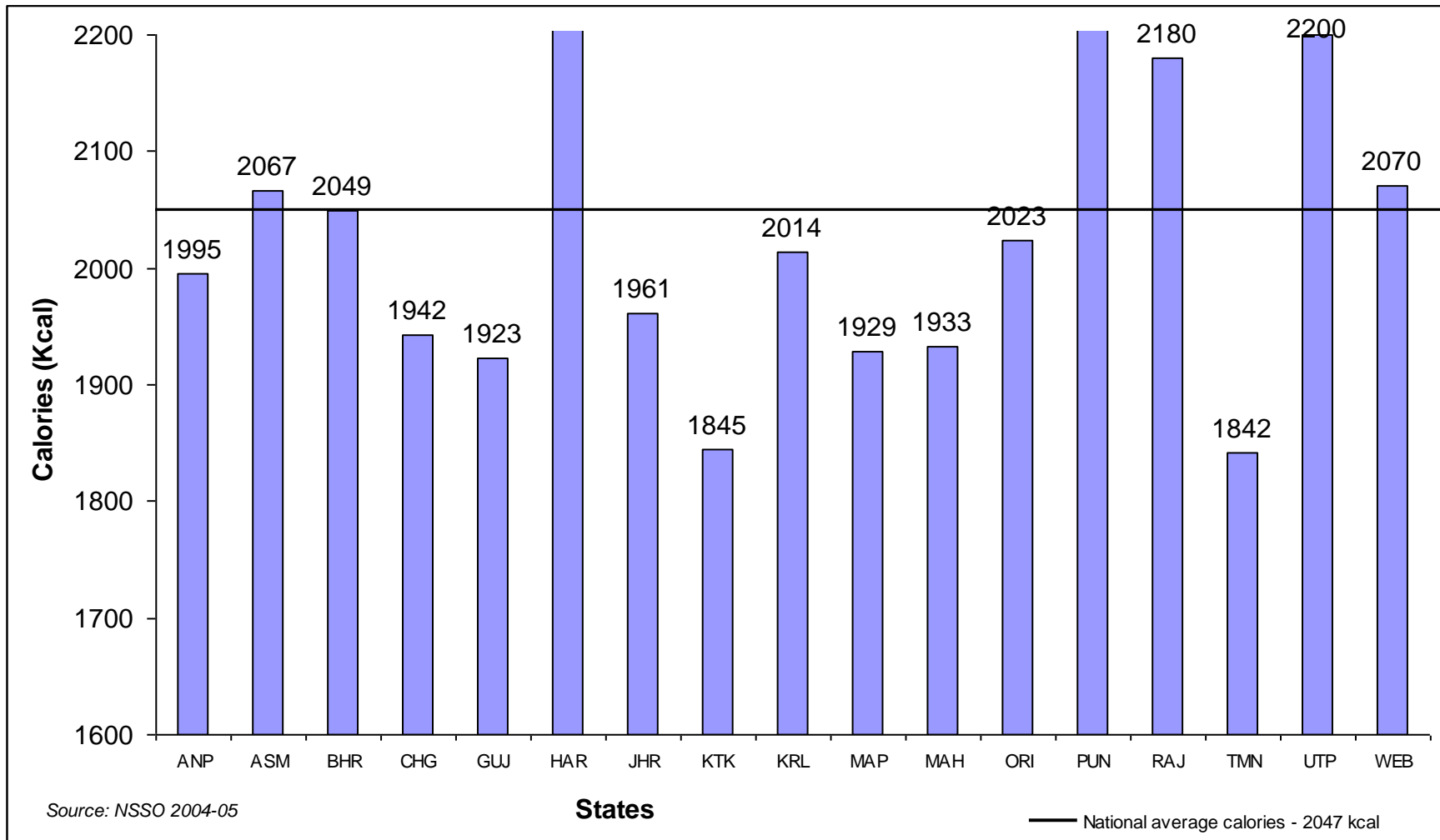
Interstate differences in average per capita cereal consumption in urban areas



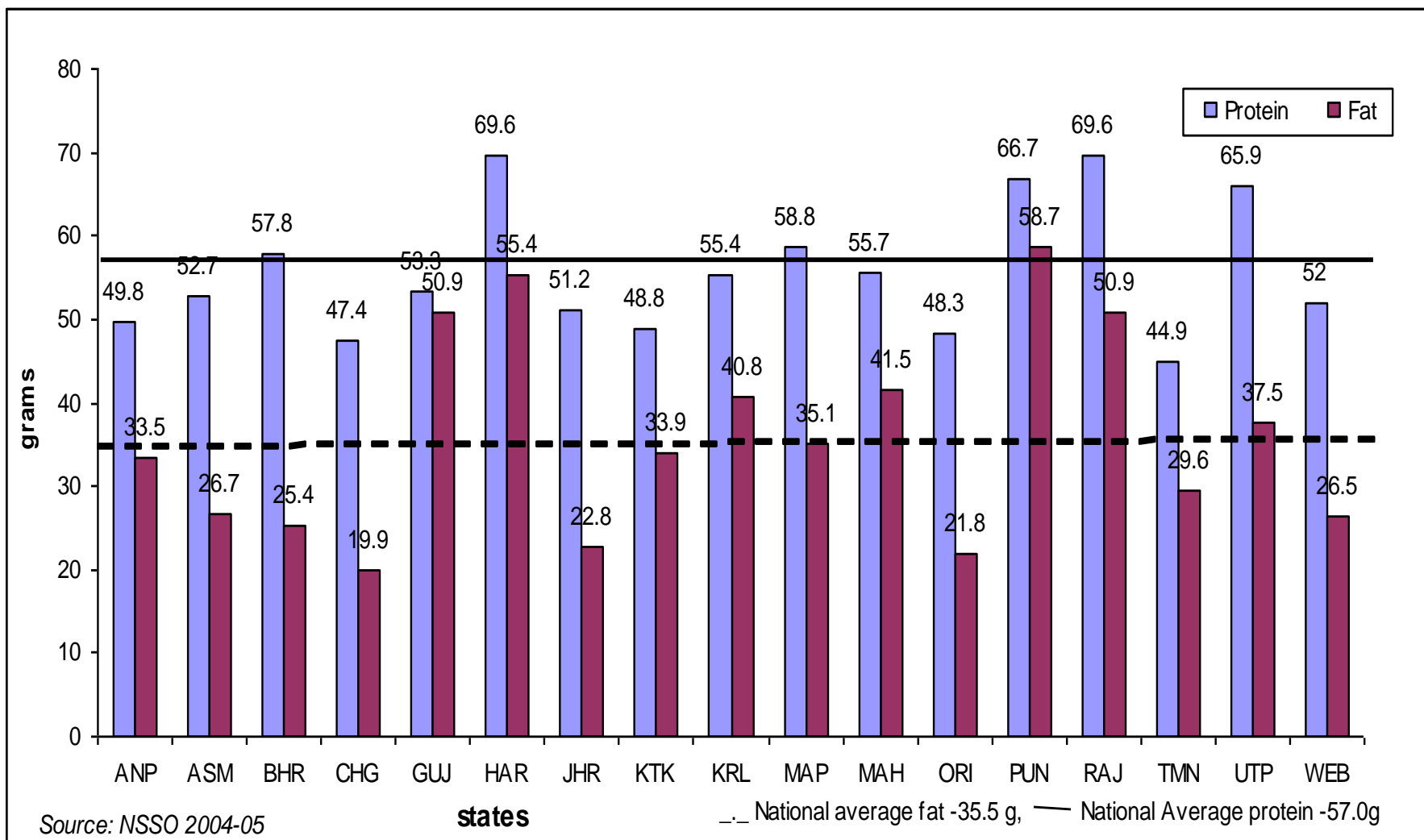
## Interstate differences in average per capita cereal consumption in rural areas



Interstate difference in average per capita intake of calories in rural area

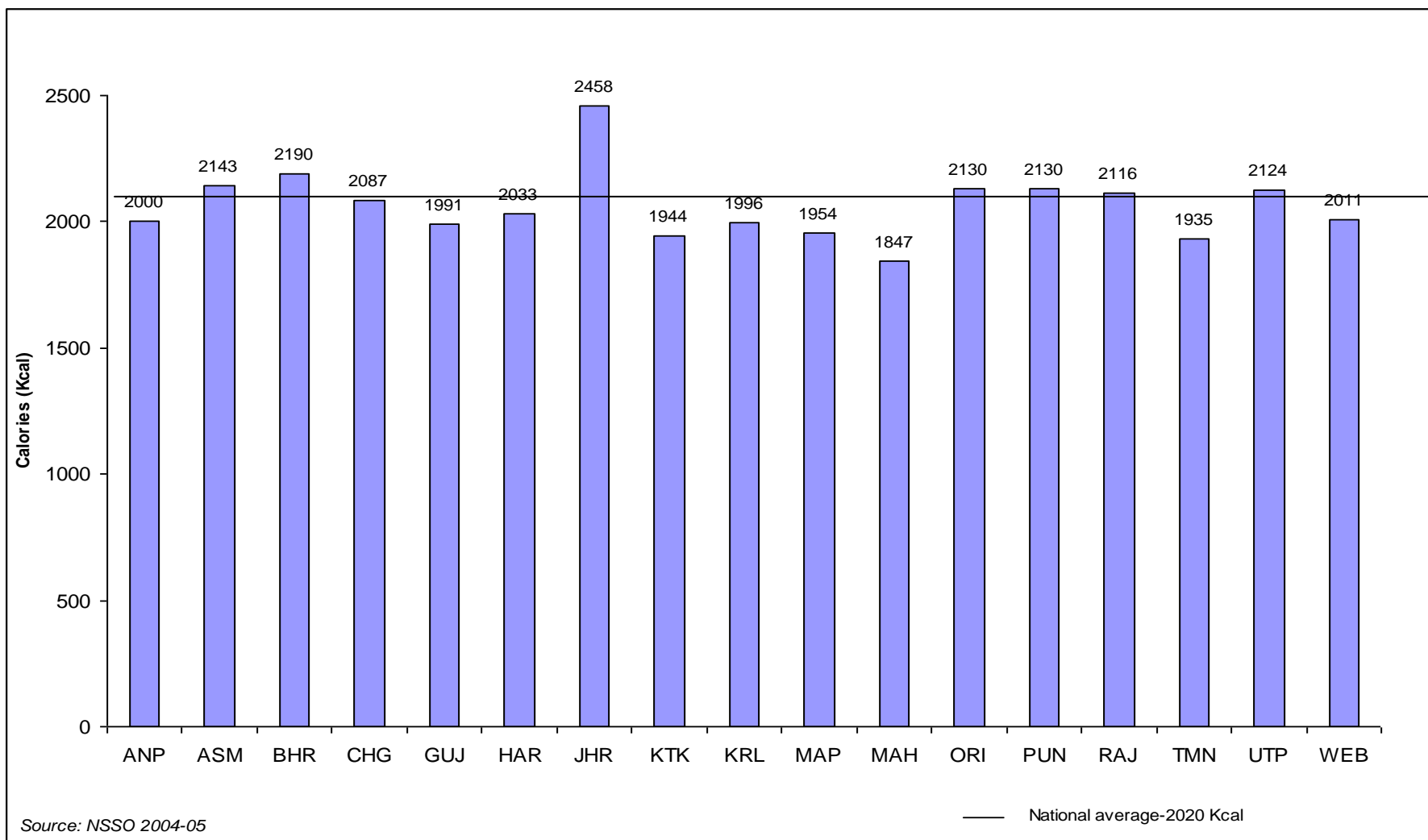


Interstate difference in average Per-Capita intake of protein and fat in rural area





Interstate difference in average per capita intake of calories in urban areas



Interstate difference in average per capita intake of protein and fat in urban areas

