

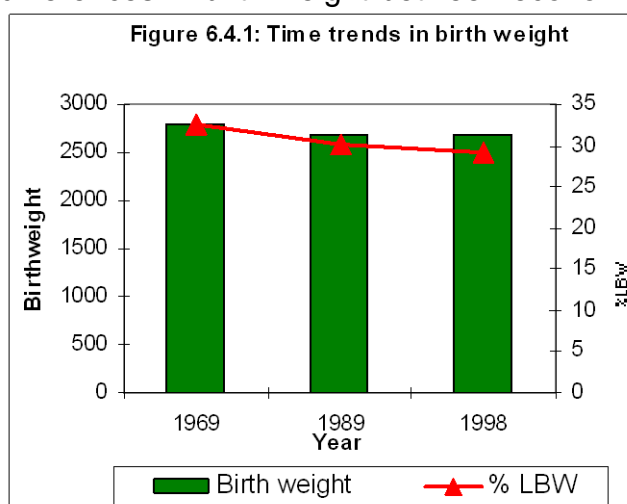
6.4 LOW BIRTH WEIGHT AND ITS CONSEQUENCES

India has the dubious distinction of having a very high prevalence of low birth weight (LBW). Currently nationwide data on birth weight in different states and districts is not available because a majority of births occur at home and these infants are not weighed soon after birth. Estimates based on available data from institutional deliveries and smaller

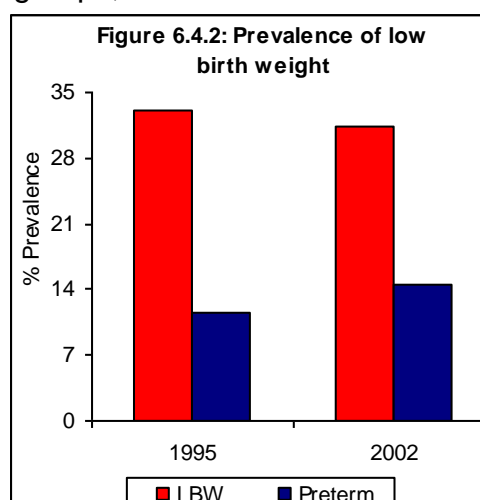
community-based studies suggest that nearly one-third of all Indian infants weigh less than 2.5 kg at birth (Figure 6.4.1 and 6.4.2). There has hardly been any change in birth weight trends in the past three decades. There are differences in birth weight between economic groups; with incidence of low birth

Text Box no. 6.4.1

- During the last three decades there has not been any major reduction in the proportion of low birth weight babies.
- In most states there has been substantial reduction in IMR even though there is no change in birth weight.
- Reduction in low birth weight is not an essential prerequisite for reduction in IMR



Source: NFI 25 Years report



Source: National Neonatology forum

rate is highest in the low income groups (Table 6.4.1). A gender difference has been noted in mean birth weights, with female infants tending to weigh less than male infants.

Birth weight is influenced by the nutritional and health status of the mother. Numerous studies have clearly established that there is a good correlation between birth weights and maternal weight; poor pregnancy weight gain and maternal undernutrition are associated with low birth weight (Table 6.4.2).

A significant reduction in birth weight has been reported in anaemic women; low birth weight

Table 6.4.1: Birth Weight and Socio-economic Status

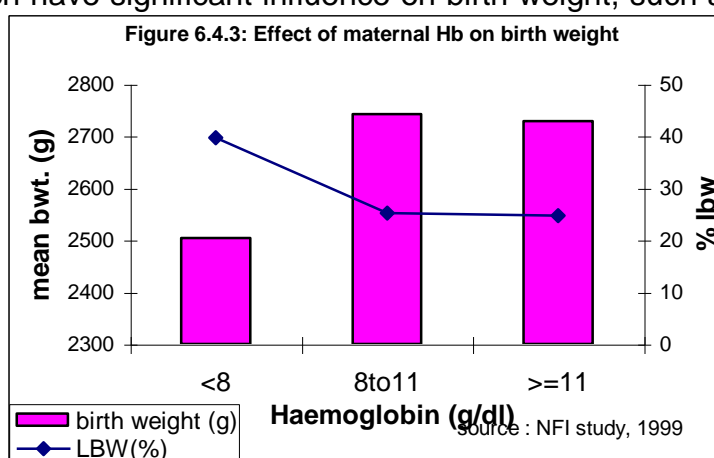
	Poor Income	Middle Income	High Income
Age (years)	24.1	24.3	27.8
Parity	2.41	1.96	1.61
Height (cm)	151.5	154.2	156.3
Weight (kg)	45.7	49.9	56.2
Hb (g/dl)	10.9	11.1	12.4
Birth weight (kg)	2.70	2.90	3.13

Source: Women and nutrition in India

rate doubles when Hb levels fall below 8 grms/dl (Figures 6.4.3). This is perhaps partly due to anemia per se and partly due to poor maternal nutrition and antenatal care in anemic women.

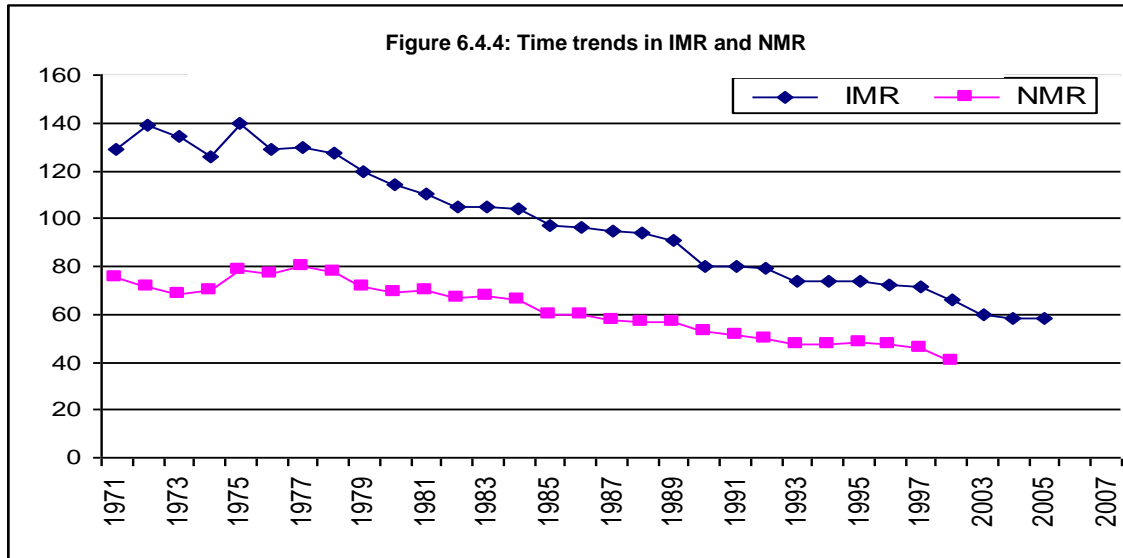
Category	Mother weight (kgs)	No.	Mean birth weight (gm)	Standard deviation
I	< 45	128	2639.6	420.33
II	45-54	251	2779.1	351.77
III	>=55	96	3009.41	430.79
Total		475	2788.0	

There has not been any substantial decline in LBW deliveries over the last three decades. Some factors, which have significant influence on birth weight, such as the parents' build, are not amenable to short term corrective interventions. On the other hand, factors like anaemia, pregnancy induced hypertension and low maternal weight gain during pregnancy can be corrected; effective management of these problems could result in substantial reduction both in pre-term births and birth of small for date neonates. The National Rural Health Mission attempts to improve the coverage, content and quality of antenatal care and bring about a convergence with the efforts of the ICDS system to provide food supplements to improve maternal nutrition. Effective implementation of these interventions could result in some reduction in low birth weight rates.



The National Rural Health Mission attempts to improve the coverage, content and quality of antenatal care and bring about a convergence with the efforts of the ICDS system to provide food supplements to improve maternal nutrition. Effective implementation of these interventions could result in some reduction in low birth weight rates.

Studies on effect of birth weight on neonatal mortality carried out by Ghosh et al showed that majority of LBW babies in India are born at term but have intra uterine growth retardation; their survival chances are much better than the pre-term babies with similar birth weight. The demonstration that most term IUGR babies will survive they are exclusively breast fed, kept warm and free from infection, paved way for efforts to provide essential newborn care in primary health care settings. In spite of the fact that there has been no decline in the prevalence of low birth weight, the country has achieved substantial decline in IMR and some reduction in NMR (Figure 6.4.4). In Kerala where nearly all deliveries occur in hospitals providing essential intrapartum and neonatal care, neonatal mortality rates are comparable to the developed countries in spite of the fact that over 20% of neonates are of low birth weight.



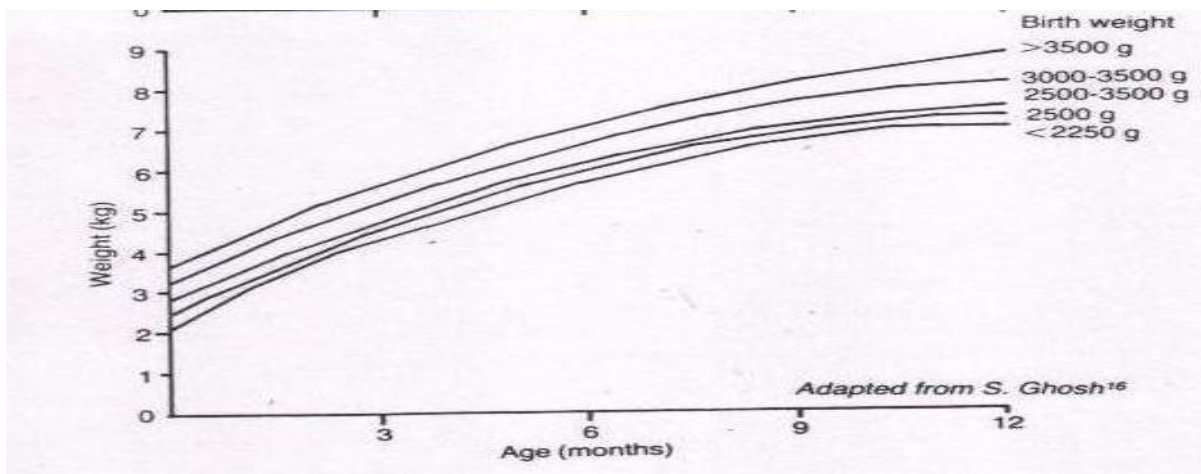
Under NRHM efforts are being made to:

- screen all pregnant women for under-nutrition and anaemia and provide appropriate interventions so that LBW associated with these problems can be reduced ;
- advise at-risk individuals to have delivery in institutions, which can provide optimal intrapartum and neonatal care and improve neonatal survival even among low birth weight neonates ;
- have the anganwadi worker check the birth weight of babies as soon after delivery as possible in all home deliveries and refer those neonates with birth weight less than 2.2 kg to hospitals where there is a pediatrician available. So that these high risk neonates get adequate care and there is reduction in neonatal mortality.

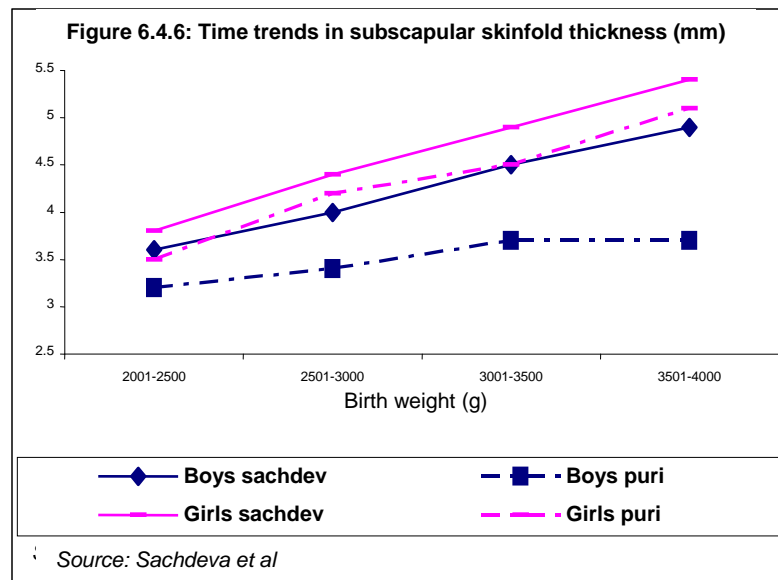
If these interventions are fully operationalised it will be possible to achieve some reduction in low birth weight and substantial reduction in the neonatal mortality rate within a short period.

With improving survival, the issues pertaining to nutritional and health status of surviving children are becoming major concerns. Studies carried out by Ghosh and coworkers in the seventies and later confirmed by other investigators have shown that LBW children have a low trajectory for growth in infancy and childhood (Figure 6.4 5). The high low birth-weight rate in India is at least part responsible for the under-nutrition in childhood and adolescence.

Figure 6.4.5: Growth in relation to birth weight



It is however important to remember that the seeds for obesity in adult life might also be sown during the intrauterine period. Studies on anthropometric parameters of neonates in a Delhi hospital showed that over the last two decades the birth weight of neonates had remained unaltered but there was an increase in fat fold thickness in all gestational age and birth weight categories (Figure 6.4.6). The implications of these findings are not clear; an increase in adiposity in neonates is a matter of concern and these children should be carefully followed up.



Long-term consequences of low birth weight

It is possible that the risk factors obesity in adult life might be present decades earlier. The thrifty gene hypothesis proposes that populations who had faced energy scarcity over millennia may evolve so that majority have thrifty gene, which conserves energy. If this population gets adequate or excess energy intake, they lay down fat, develop abdominal obesity, insulin resistance, which may progress to diabetes, and incur risk of hypertension and CVD. Barker's thrifty phenotype hypothesis shifts the evolution of thriftiness to intrauterine

period. If this hypothesis of foetal origin of adult NCD is correct; Indians with one-third low birth weight rate may be at higher risk of metabolic syndrome because one third of them are born with LBW. Over the last decade several investigators have explored these possibilities.

Gupta et al showed that both the low birth weight neonates with intrauterine growth retardation and the high birth weight neonates (many of whom are born to mothers with IGT or gestational diabetes) may develop insulin resistance and are at risk of developing metabolic syndrome at later life.

Yajnik and coworkers in Pune explored the relationship between low birth weight and glucose. Insulin metabolism using oral glucose tolerance test (OGTT) in 477 children born in KEM hospital, Pune. They found that Indian neonates were small because they had poor muscles and small abdominal viscera. These neonates however had conserved their subcutaneous fat. At 4 years of age plasma glucose and insulin concentrations 30 minutes after glucose load were inversely related to birth weight (Table 6.4.3) but directly related to current weight and fatfold thicknesses. The relationship between glucose / insulin and birth weight was independent of current weight. Thus poor intra-uterine growth, but relatively excess growth later ('obesity') was associated with metabolic endocrine abnormalities, which could lead to diabetes in adult life. Adolescent obesity is a well-documented entity in both urban and rural areas and may form the stepping-stone for adult obesity and increase risk of noncommunicable disease risk.

Bhargava and co-workers have shown the adverse effect of life styles of urban Delhites in the nineties which rendered even low middle-income adults who were undernourished in infancy, childhood and adolescence, one to develop obesity- both general and abdominal- hypertension and diabetes by the time they are thirty.

Table 6.4.3: Birth weight, plasma glucose and insulin concentrations in 4-year old urban children

Birth weight (kg)	Number of children	Plasma glucose (mmol/l) at 30 min	Plasma insulin (pmol/l) at 30 min
=< 2.4	36	8.1	321
-2.6	36	8.3	337
-2.8	44	7.8	309
-3.0	42	7.9	298
=>3.0	43	7.5	289
All	201	7.9	310
P for trend		0.01	0.04

Source: Yajnik et al, 1998

Table 6.4.4: Time Trends in nutritional status of Delhi cohort

Age	Male		Female	
	No.	Weight (Kg)	No.	Weight (Kg)
At birth	803	2.89±0.44	561	2.79±0.38
2 yrs	834	10.3±1.3	609	9.8±1.2
12 yrs	867	30.9±5.9	625	32.2±6.7
30 yrs	886	71.8±14.0	640	59.2±13.4

Source: Bhargava et al, 2004

Table 6.4.5: Current Status of Delhi cohort

Characteristic	Men		Women	
	No.	Value	No.	Value
Weight (Kg.)	886	71.8±14.0	640	59.2±13.4
Height (m)	886	1.70±0.06	638	1.55±0.06
BMI	886	24.9±4.3	638	24.6±5.1
Waist:Hip ratio	886	0.92±0.06	639	0.82±0.07
BMI>_25	886	47.4	638	45.5
BMI>_23	886	66.0	638	61.8
Central Obesity (%)	886	65.5	639	31
Impaired GTT	849	16	539	14

Source: Bhargava et al, 2004

The study demonstrated the potential adverse consequences of rapid change in the dietary habits and life style of urban population in Delhi in the last decade.

These data suggest that the possibility that low birth weight and undernutrition in childhood may predispose to overnutrition and NCD in adult life, providing yet another rationale for energetic interventions to reduce low birth weight and undernutrition in childhood. Early detection and correction of under-nutrition until children attain appropriate weight for their height is essential to promote optimal growth, nutrition and health.

References

- 6.4.1 Barker DJ Intrauterine growth retardation and adult disease *Current Obst and Gyn* 3: 200-206, 1993
- 6.4.2 Bhargava SK. Sachdev HP. Fall HD. Osmond C. Lakshmy R. Barker DJP. Biswas SKD. Ramji S. Prabhakaran D. Reddy KS. 2004. Relation of serial changes in childhood Body Mass Index to impaired glucose tolerance in young adulthood. *New Eng J Med.*, 350: 865-875pp.
- 6.4.3 Ghosh S Bhargava SK Madhavan S Taskar AD Bhargava V and Nigam SK ; Intrauterine growth of north Indian babies *Paediatrics* 47 : 5 826-830 1971
- 6.4.4 Ghosh S Bhargava SK Moriyamma IW. Longitudinal study of survival and out comes of a birth cohort. Report of the research project 01-658-2 NCHS Maryland USA
- 6.4.5 Gupta R, Yadav KK, Gupta A and Gupta N: Insulin levels in low birth weight neonates. *Ind. J. Med. Res.* 118: 197-203, 2003
- 6.4.6 Multicentre study on low birth weight: *National Neonatology Forum*, 1995 and 2002.
- 6.4.7 Nutrition Foundation of India. *Twenty-Five Years Report 1980-2005*. New Delhi. 2005
- 6.4.8 Prema Ramachandran. 1989. *Nutrition in Pregnancy in Women and Nutrition in India*, Eds. C. Gopalan, Suminder Kaur. Special Publication No. 5. Nutrition Foundation of India, New Delhi.
- 6.4.9 RGI, SRS bulletin http://www.cesusindia.net/vs/srs/bulletins/SRS_bulletins accessed on 3.9.2007
- 6.4.10 Sachdev HPS: Recent trends in nutritional status of children in India. Proceedings of NFI-WHO SEARO Syposium on Nutrition in Developmental Transition: NFI, New Delhi 90-112, 2006
- 6.4.11 Sachdev HPS, Shah D Gupta R and Ramji S Secular changes in new born adiposity in an urban hospital; *Indian paediatrics* 41 6999-703 204
- 6.4.12 Yajnik CS. 1998. Diabetes in Indians: small at birth or big as adults or both? In P. Shetty & C. Gopalan, eds. *Diet, nutrition and chronic disease: An Asian perspective*. London, Smith Gordan and Company Limited. 43-46pp.